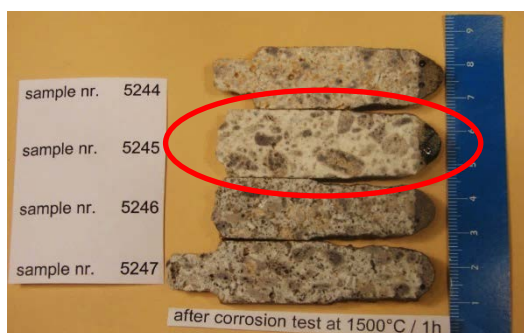


## PRODUCT DESCRIPTION

### HASLE D65TA

HASLE D65TA is a low cement castable based on Andalusite and Corundum, providing high mechanical strength as well as good Thermal Shock resistance. Low porosity makes it harder for chemical compounds to enter D65TA. Corundum provides D65TA with superior resistance to slag- and build up.

HASLE D65TA has a high resistance to molten slag, see picture below. Sample 5245 is HASLE D65TA compared with competitor's products of comparable chemical composition, after "finger dipping test" in molten slag from a Danish waste incinerator.



Comparing D65TA with competitors' products

Damper Gate – lower part casted in D65TA



### Applications

HASLE D65TA targets critical areas in the Cement Industry, such as Burner Pipe and Damper Gates, but can also be used in other cement applications.

HASLE D65TA is recommended for Waste-to-Energy Incinerators due to the resistance to chemical attack from molten slag.

**WE PROTECT YOUR PROCESS**