



European Foundry achieves excellent lining lifetime in foundry ladles

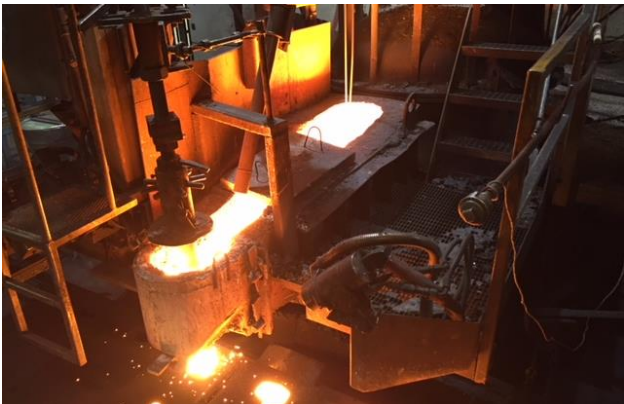
One of Northern Europe's largest foundries, Vald. Birn A/S, manufactures cast iron components for various industries, primarily the Heavy Truck industry. In the past, they have had problems with the refractory products they have used i.e. cracking due to thermal shock and non-consistent quality.

"We have high safety standards at Vald. Birn", says supervisor Jesper Mølgård, "We need our refractory solutions to be of high, consistent quality, be easy to handle and have a good lifecycle performance. We prefer using a domestic supplier, so when we discovered HASLE's products, we were keen to test their performance in our foundry."

HASLE Refractories has supplied Vald. Birn A/S with low cement castables for (re)-lining of their foundry ladles since they first tried it in 2015.

"We found that HASLE's high-quality products have a very consistent quality and great flowability", says Jesper Mølgård, "We achieved an excellent lifetime of 3-4 months in the big ladles and 4 months in the small ladles, and we are currently identifying other areas where HASLE's products can be used".

All HASLE castables are made at HASLE's state-of-the-art plant in Denmark. For more information, contact us at hasle@hasle-refractories.com.



Casting tray lined with D59A



Transport ladle lined with HASLE D1700A