

COOLER BULL NOSE LIFETIME DOUBLED WITH HASLE D52A

Excellent Performance of HASLE D52A Castable in Cooler Bull Nose!

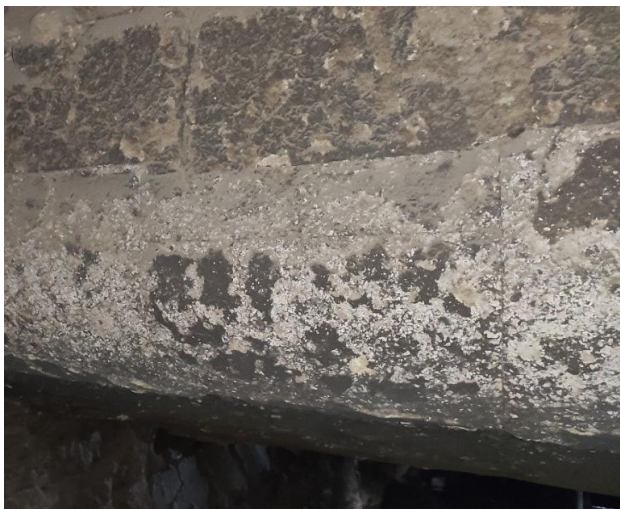
A 6000 TPD cement plant in South India, using imported coal with up to 20% pet coke as fuel, was facing refractory challenge in its Cooler Bull Nose area. Using a low cement castable from a different supplier, refractory life in this area was always less than 12 months. The plant had to shut down and replace the castable lining once a year, which was costly and caused loss of valuable production time.

In 2015, HASLE supplied the well-known D52A castable to the cement plant for the first time. The lining of D52A performed much better than the previous lining, much to the customer's satisfaction.

The latest installation of HASLE D52A took place in 2018, and in September 2020, it was still found to be in good shape. No cracks or other signs of major abrasion and chemical attack were observed.

In order to achieve the best possible performance of our castable lining, a team of experienced HASLE engineers always do on-site supervision.

If you would like to improve your cement plant's run factor and eliminate costly, unplanned stops due to refractory problems, contact us today at info@hasle-refractories.com to learn more.



Both images show HASLE D52A on Cooler Bull Nose after 24 months