



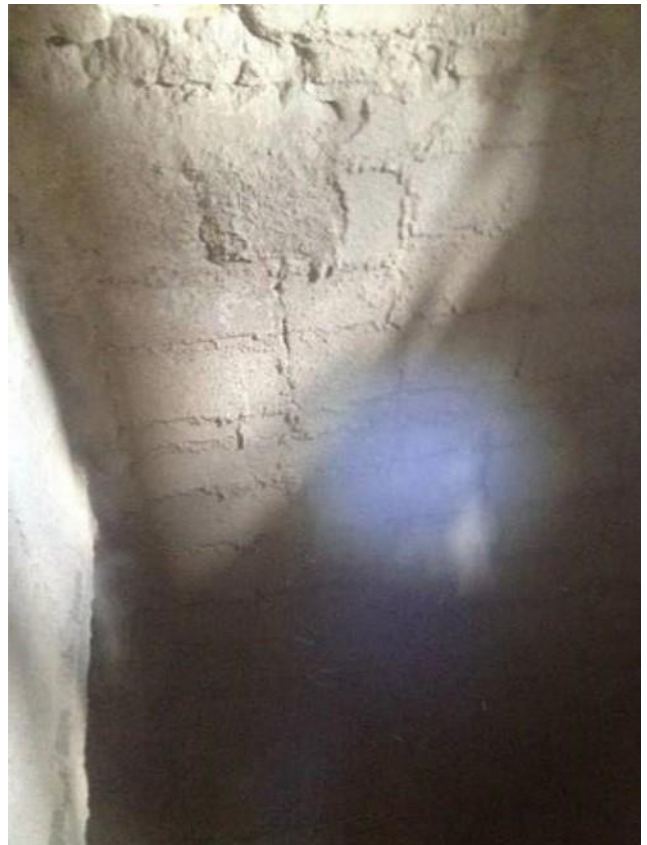
Cement plant achieves 3,5 years lining lifetime in Calciner with HASLE D59A

A 10,000 TPD Asian cement plant, operating on 100% coal, was having trouble with short lining lifetime in their Calciner. Using a castable from a different supplier, they never achieved a lifetime of more than 2 years. The downtime, manhours and materials needed for relining was becoming costly.

Needing a longer lasting alternative, the cement plant decided to install HASLE D59A in their Calciner. HASLE D59A has high mechanical strength, good shock resistance and excellent abrasion resistance. It is known to extend lining lifetime significantly. As always, a team of skilled HASLE engineers supervised the installation to achieve the best possible performance of our castable lining after installation.

After lining the Calciner with HASLE D59A, the cement plant has close to doubled the lining life in their Calciner and achieved twice as much run time before re-lining is needed. Over time, this becomes a significant financial gain for the cement plant, as downtime, manhours and materials needed for re-lining has been halved.

Contact us to learn how we can help improve your high temperature process.



Calciner after 29 months. Final lifetime 3,5 years!