



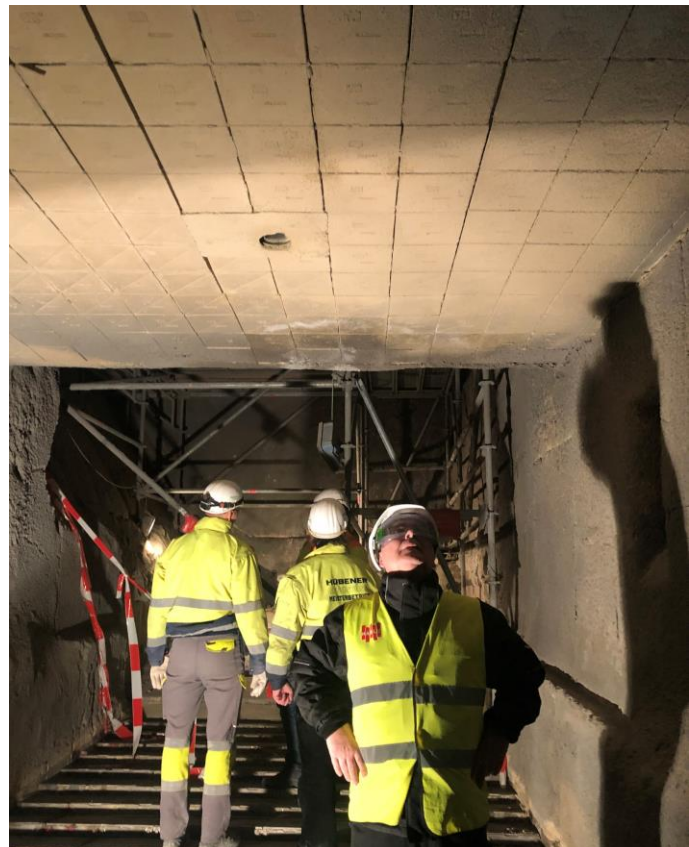
German Cement Plant achieves +2-year lifetime with HASLE's Modular Lining

Among our customers is a cement plant in Germany, which runs on 60-70% refuse-derived fuel (RDF). Using RDFs, the lining in the critical areas of their production is subjected to significant alkali attack. In recent years, they have had to replace their lining regularly.

Therefore, they were looking for a more durable refractory lining with a significantly longer lifetime. In 2018, the cement plant installed a 6m² trial of HASLE's precast Modular Lining. After two years, they saw no wear on the lining of the cooler roof. In fact, the Modular Lining still looked brand new, so they decided to install additional m².

Using HASLE's precast Modular Lining is a long-lasting solution. It requires fewer shut-downs, and it also lowers the quantities of raw materials needed for keeping the lining operational. With HASLE's precast Modular Lining you achieve a better run factor, while lower the use of natural resources per produced unit at the same time.

Visit our website to learn more, or contact us today, if you would like to explore how we can help you towards a more sustainable cement production.



Modular Lining after 2 years